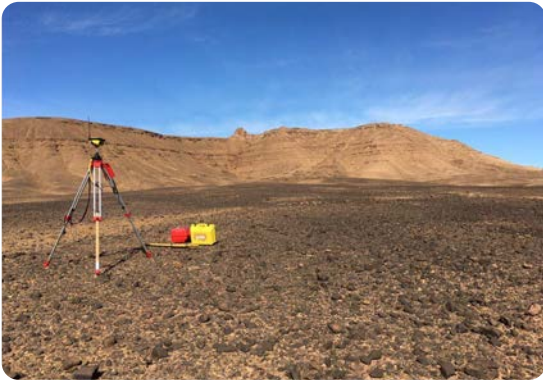


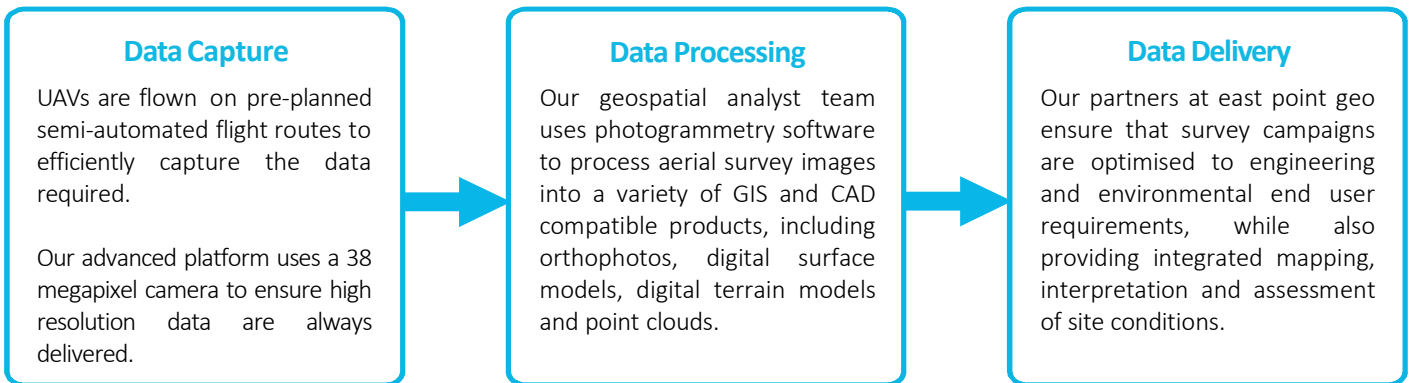


GeoDrone for Terrain Evaluation



Satellite and aerial images are often outdated or unavailable at the desired resolution. GeoDrone Survey are specialists in providing data capture and processing services to meet a variety of end-user and site-survey requirements, from high resolution aerial photographs to high-density point clouds.

Using industry leading software, we are able to provide high resolution, accurate spatial data in both 2D and 3D. Our products are compatible with many GIS and CAD software packages, including ESRI's ArcGIS and Autodesk.



Data Capture

UAVs are flown on pre-planned semi-automated flight routes to efficiently capture the data required.

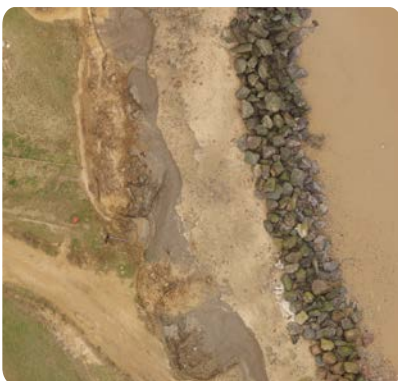
Our advanced platform uses a 38 megapixel camera to ensure high resolution data are always delivered.

Data Processing

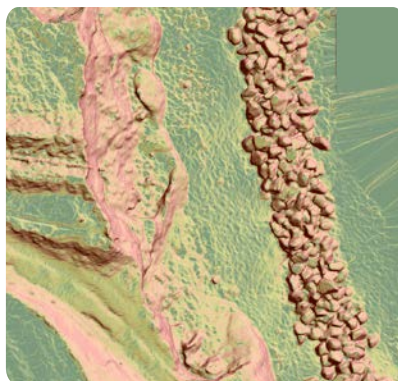
Our geospatial analyst team uses photogrammetry software to process aerial survey images into a variety of GIS and CAD compatible products, including orthophotos, digital surface models, digital terrain models and point clouds.

Data Delivery

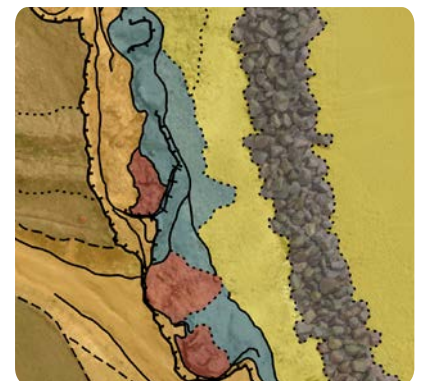
Our partners at east point geo ensure that survey campaigns are optimised to engineering and environmental end user requirements, while also providing integrated mapping, interpretation and assessment of site conditions.



High resolution orthophotos detail contemporary ground conditions



Accurate digital surface models show topography, slope and elevation



Active and historical processes can be characterised at engineering scales

